

# *idfx*

INSPIRATION FOR INTERIOR DESIGN PROFESSIONALS

[www.idfxmagazine.com](http://www.idfxmagazine.com)

## GLASS AC

Designers see the light with  
latest looks for conservator

## OFF THE WA

Glossy, matt, metallic or textu  
— what's new in wall surfa

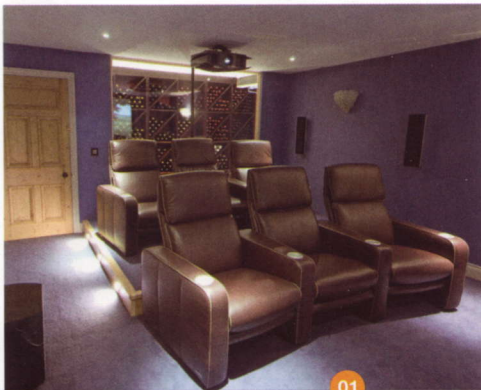
# Lean Machine

Automotive design gives  
furniture some va-va-voom

FEBRUARY 2009 / 1



9 771462 061021

**T**he home cinema is as much of a must-have in today's big-budget projects as the home office was a decade ago, and even modest family homes can incorporate an area that can be turned at the touch of a button from a snug into a cinema experience.

But the kit required to transform a basement or box room into the flicks or a Dean Street-style rushes theatre is complex stuff and it's not just about the technology. Decor and layout has a big impact too. Which is where specialist companies can help. idFX asked a range of installers and retailers of home cinema equipment to give their top recommendations for what you need in a variety of price ranges. Roll credits.

**01 Steve Martin, managing director of Martin Kleiser: £100,000-£140,000 budget**  
 'With this budget you can create a high-end, dedicated home cinema with all the latest goodies,' says Martin, who also chairs CEDIA, the trade body that represents leading companies in this field. For such a budget he would choose a Kaleidescape media server, controlled by a Crestron touch pad. For the projector, he would opt for Sim, a company which he says offers 'ultimate performance', in conjunction with an anamorphic lens and a projection screen by Screen Research. The anamorphic lens eliminates the black strips seen when a movie shot in ultra-wide CinemaScope format is shown on an ordinary wide screen (for a full description of how it works, see [www.zuggsoft.com/theater/prism.htm](http://www.zuggsoft.com/theater/prism.htm)). For the audio he would choose Linn. 'These products will give you a real cinema experience and my clients say that the picture and sound quality is better than going to the movies,' he says. [www.martin-kleiser.net](http://www.martin-kleiser.net)

**02 Iain Brown, director of Kensington Home Technology: £120,000 budget**  
 For a big-budget, dedicated home cinema room, Brown would start with a projector by Digital Projection. 'They have very bright projectors that are easily configurable. It's not a thing of beauty, but gives cinema quality imagery,' he says. For the screen he would recommend a slightly curved version by Supernova, which ensures there is no distortion in the viewable area, used in conjunction with an anamorphic lens. He would build the screen into a stand-alone speaker system, Aerial Acoustics System 1, which conceals the speakers behind fabric that can be chosen to match the decor. A Kaleidescape media server, Denon Blu-Ray player, ADA video processing and amplification system and a Crestron touchpad controller complete the job. [www.k-ht.co.uk](http://www.k-ht.co.uk)

# LURE OF THE BIG SCREEN

*Home cinema's appeal is just as great for wannabe film producers as it is for movie and sports fans. We have the technology but, as we shall see, there's more to it than that*

WORDS KAY HILL



**03 Matt Pullara, shop manager at Laservision: £80,000 budget**

Pullara would start with an Infocus IN83 projector. 'It's a really good projector and good value for money,' he says. He would go to Lexicon for its RT-20 DVD player, MC-12B HD EQ processor and ZX-7 power amplifier, and would select the ClearPix 2 THX Certified screen from Screen Research. He would opt for a 5.1 speaker pattern using Revel Ultima speakers and Revel Performa sub-woofer. He doesn't feel the need for a media server. 'I like putting my disks on,' he says, but he would definitely find room for a PlayStation 3 and Denon Blu-Ray player. A Philips Pronto remote control, Rako lighting control, CinemaTech Equinox seating and Middle Atlantic rack complete the set-up. [www.laservision.co.uk](http://www.laservision.co.uk)



**04 Fraser Stride, marketing director of Finite Solutions: £60,000-£70,000 budget**

Stride would opt for a large fixed screen by Screen Research, set onto the wall with the speakers behind it. His choice of speakers would be Signature 7NT from Bowers and Wilkins (B&W) with two Rotel Power Amp 1095 amplifiers and a MC-12 Lexicon processor. For the projector he would select the Runco RS900. To complete the project, he would specify a Kaleidescape media server, Pioneer Blu-Ray and a TPMC 12 Crestron controller. 'It's about giving people the maximum amount of functionality but making it very easy for them to use,' he says. [www.finitesolutions.co.uk](http://www.finitesolutions.co.uk)

**05 Andy Jack, director of Isis Integrated Systems: £60,000 budget**

Jack would choose a tab-tensioned GrayHawk screen made by Stewart Filmscreen, powered with a silent Lutron motor to bring it down from the ceiling. For the projector, he would select the Runco RS1100. 'The picture quality is up there with the best there is, and the company has been around the longest and offers really good reliability and customer service,' he says. It's a large projector, so he would built it into the base of a custom-made sofa. For sound, he would choose Triad Bronze and Silver speakers to recess into the ceiling, and a Sunfire amplifier designed to keep heat to a minimum. Finally he would add in an Imerge media server, Panasonic Blu-Ray and an AMX Modero touch panel controller. [www.isisintegratedsystems.com](http://www.isisintegratedsystems.com)

